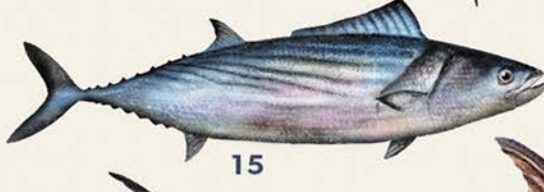
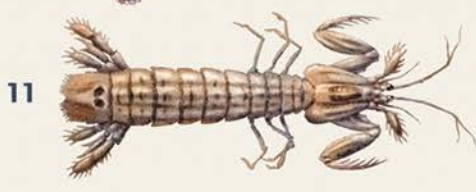
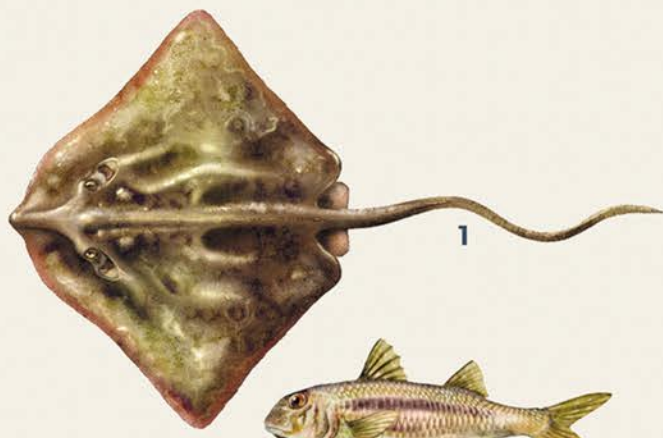


★ STAGIONALITÀ ★ DEL PESCATO IN TOSCANA



	PRIMAVERA	ESTATE	AUTUNNO	INVERNO	
1. Razza	☀	☀	🍂	❄	
2. Triglia bianca	☀	☀	🍂	❄	17. Gambero rosa
3. Nasello	☀	☀	🍂	❄	18. Spigola*
4. Muggine	☀	☀	🍂	❄	19. Orata*
5. Sarago	☀	☀	🍂	❄	20. Triglia rossa
6. Telline	☀	☀	🍂	❄	21. Pagello fragolino
7. Aragosta	☀	☀	🍂	❄	22. Scampo
8. Sogliola	☀	☀	🍂	❄	23. Mazzancolla
9. Acciuga	☀	☀	🍂	❄	24. Sgombro
10. Moscardino	☀	☀	🍂	❄	25. Pesce sciabola
11. Pannocchia	☀	☀	🍂	❄	26. Sardina
12. Rossetto	☀	☀	🍂	❄	27. Seppia
13. Totano	☀	☀	🍂	❄	28. Merluzzetto
14. Ricchio di mare	☀	☀	🍂	❄	29. Polpo di scoglio
15. Palamita	☀	☀	🍂	❄	30. Calamaro
16. Pesce spada	☀	☀	🍂	❄	31. Sugarello
	☀	☀	🍂	❄	32. Gambero rosso